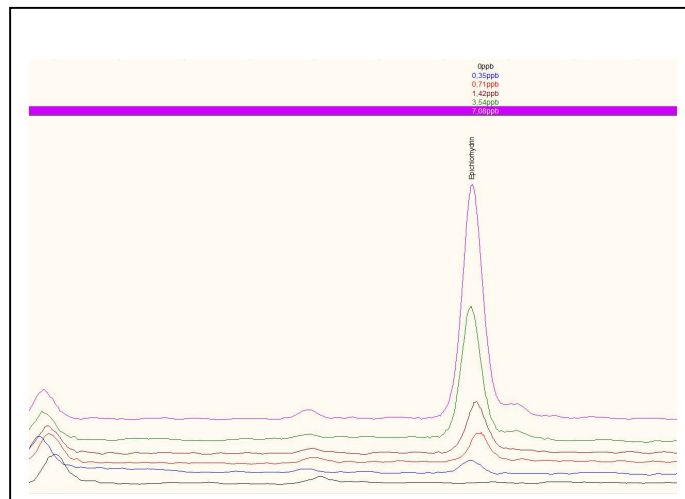
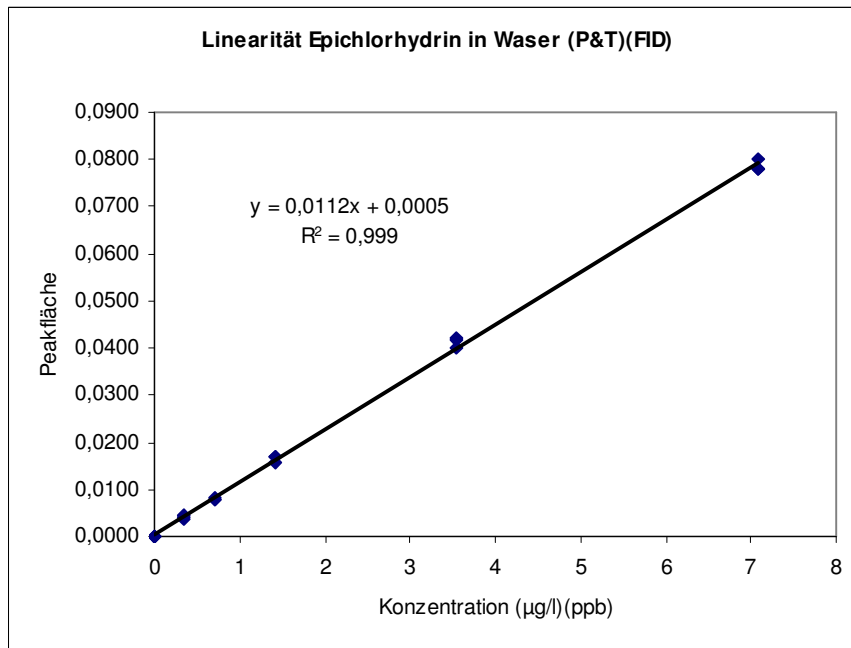


Epichlorhydrin in Wasser – VSP4000

VSP4000 Bedingungen: Probe: 40 °C; Ventil: 100 °C; T-Line: 200 °C; Trap: –35 °C;
Purge Zeit: 20min; TT 100s

GC Bedingungen: ZB624, 60m x 0.32 mm x 1.8µm; He 1.5 ml/min
35 °C/6min > 5 °C/min > 90 °C >10 °C/min > 260 °C/min / 15min

Detektor: FID



Peakhöhe entsprechend Konzentrationen 0.35 ppb – 3,5 ppb

