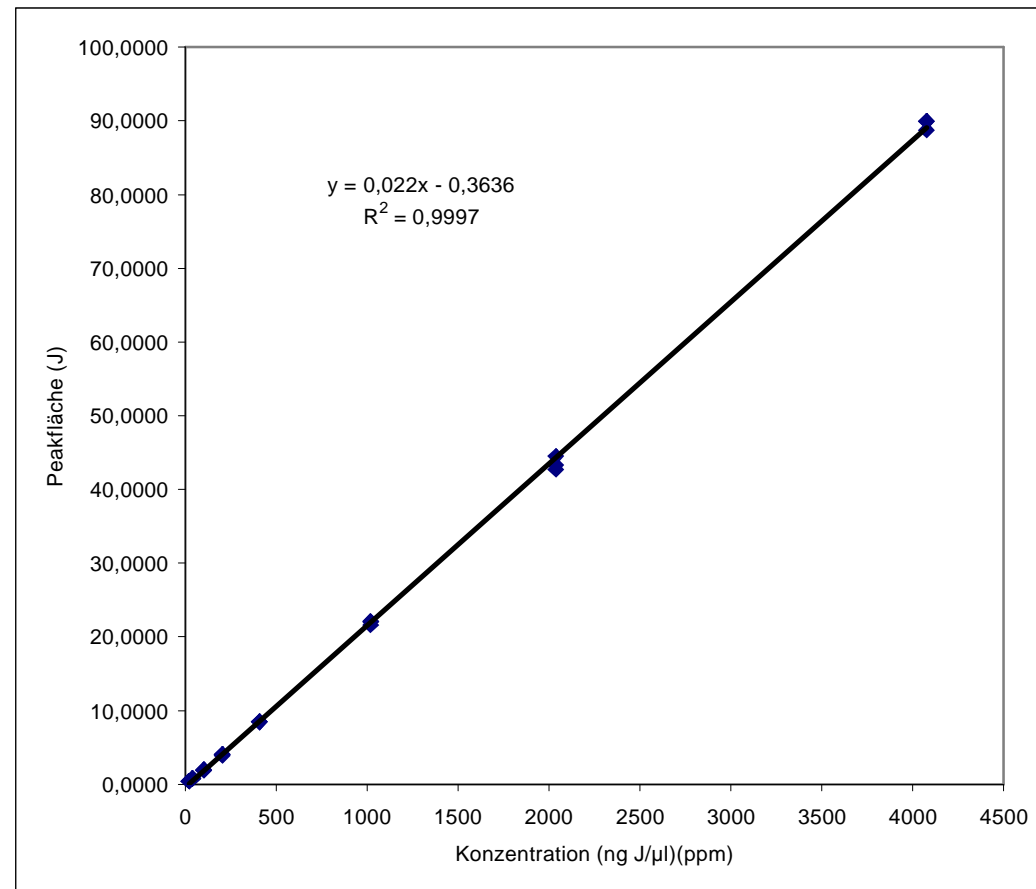
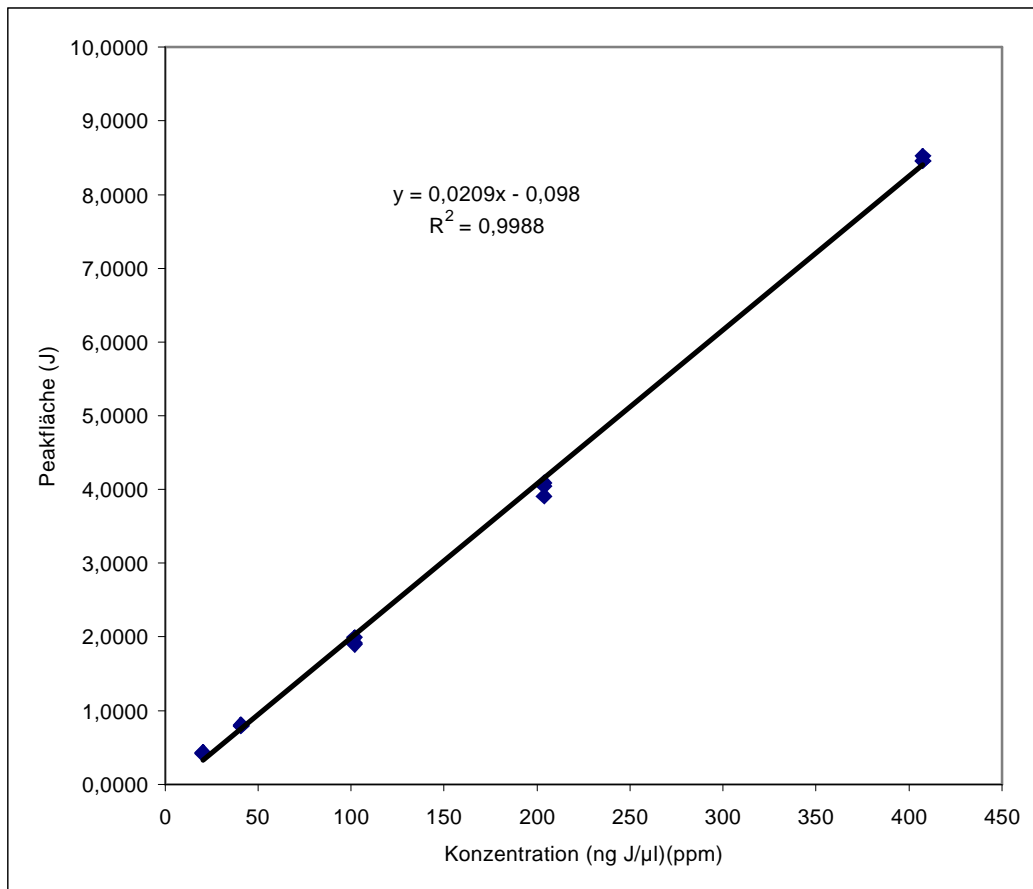


## Linearität Methyljodid (J1) am EPED



**Trennsäule:** DB624, 60 m, 0.32 mm, 1.8 μm, 70 kpa Helium, Injektion 1 μl, Split 1:20,  
**Temperaturprogramm:** 40 °C / 6 min > 20 °/min > 260 °C / 13 min (30 min)  
**EPED:** 200 μm, 4 Hz, 20 ms, O: 10 kpa, H: 10 kpa  
Analogausgang: J1, Multiplier 1

11/09