

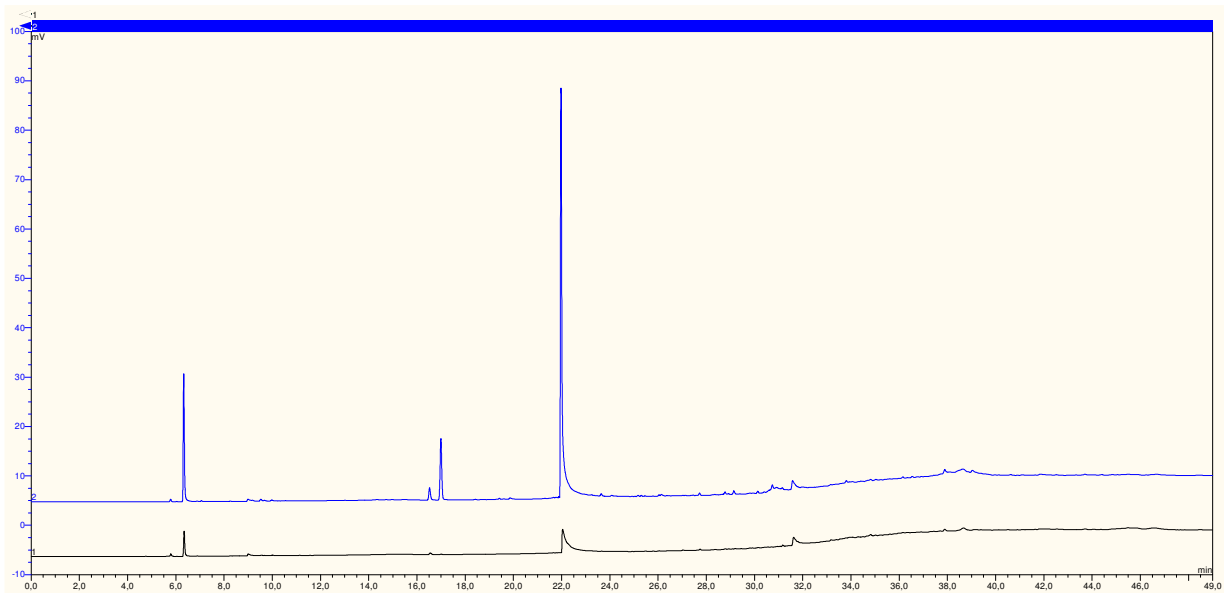
VSP4000 – Vergleich recyceltes PET / neues PET

Probenaufgabe: 100 mg PET

VSP4000 : Probe: 220 °C; Ventil: 260 °C; Purgezeit: 20min @ 20ml/min; Pipe;
Transferline: 280 °C; Trap: -35 °C; Desorb: 240 °C; Splitflow: 20 ml/min

GC Bedingungen: DB1, 60m, 0.32 mm, 0.25 µm; 120 kPa He
40 °C/6min > 10 °C/min > 320 °C/15 min

Detektor: FID



blau: recyceltes PET

schwarz: neues PET



info@imtgbh.de

pet_recyclt_neu.pdf