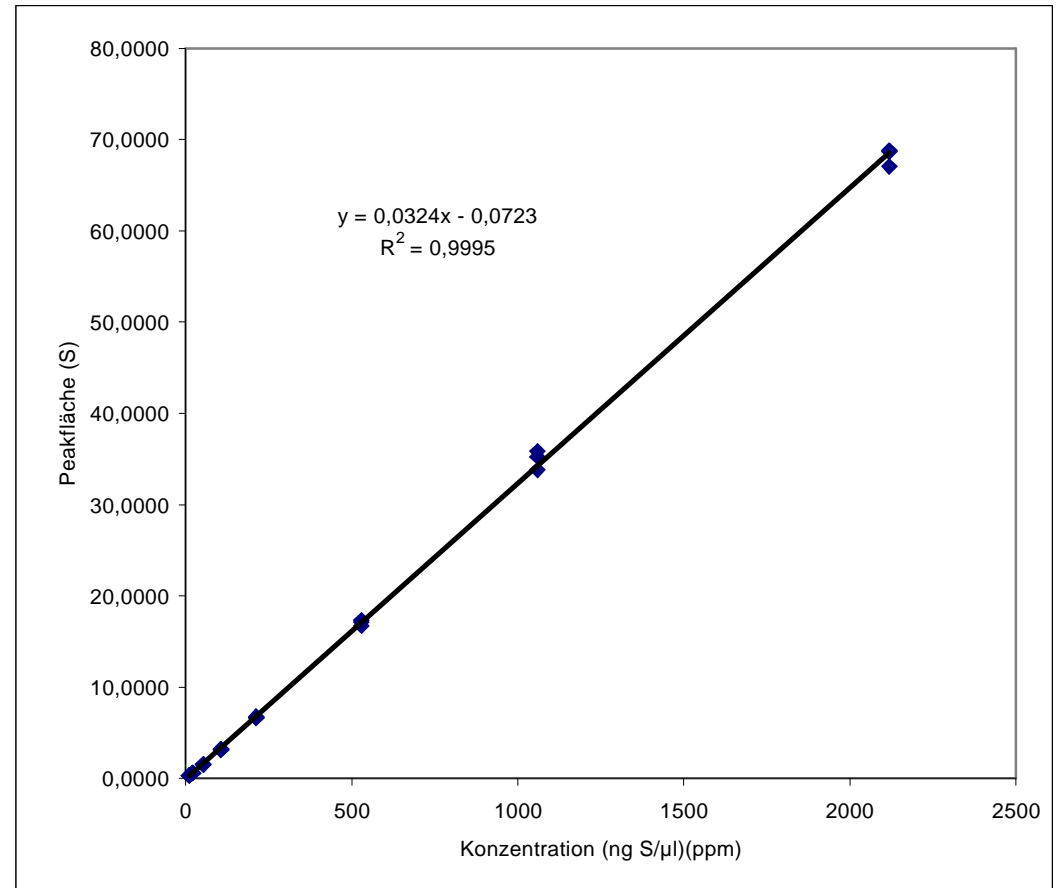
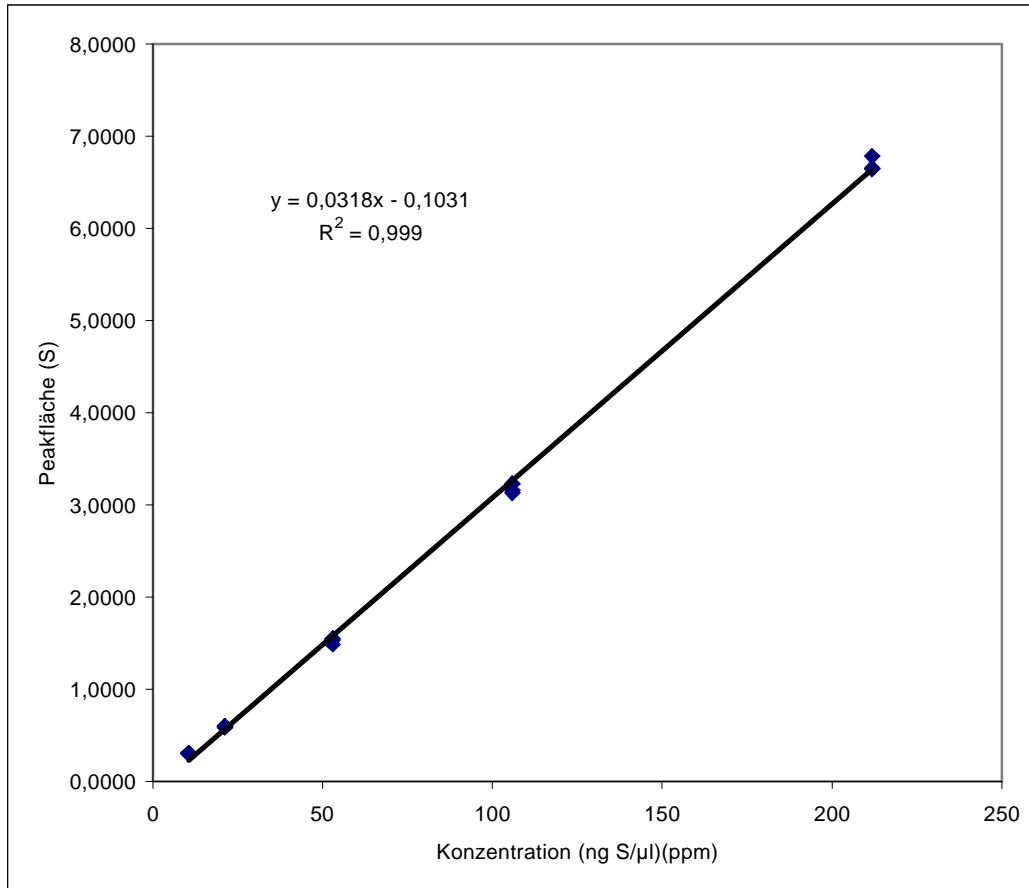


Linearität Schwefelkohlenstoff (S*3) am EPED



Trennsäule: DB624, 60 m, 0.32 mm, 1.8 µm, 70 kpa Helium, Injektion 1 µl, Split 1:20,
Temperaturprogramm: 40 °C / 6 min > 20 °/min > 260 °C / 13 min (30 min)
EPED: 200 µm, 4 Hz, 20 ms, O: 10 kpa, H: 10 kpa
Analogausgang: S*3, Multiplier 1

11/09