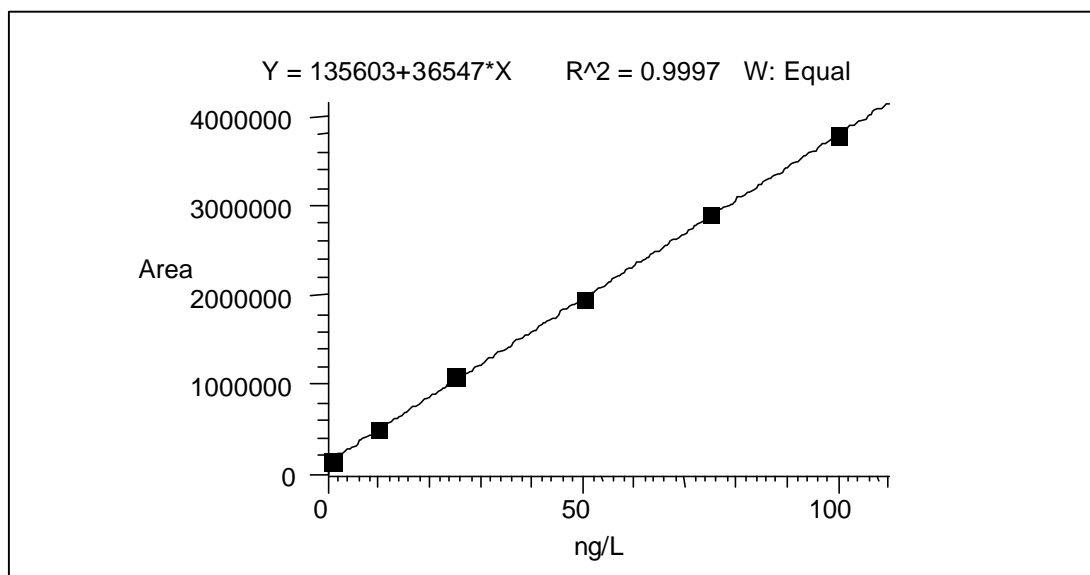
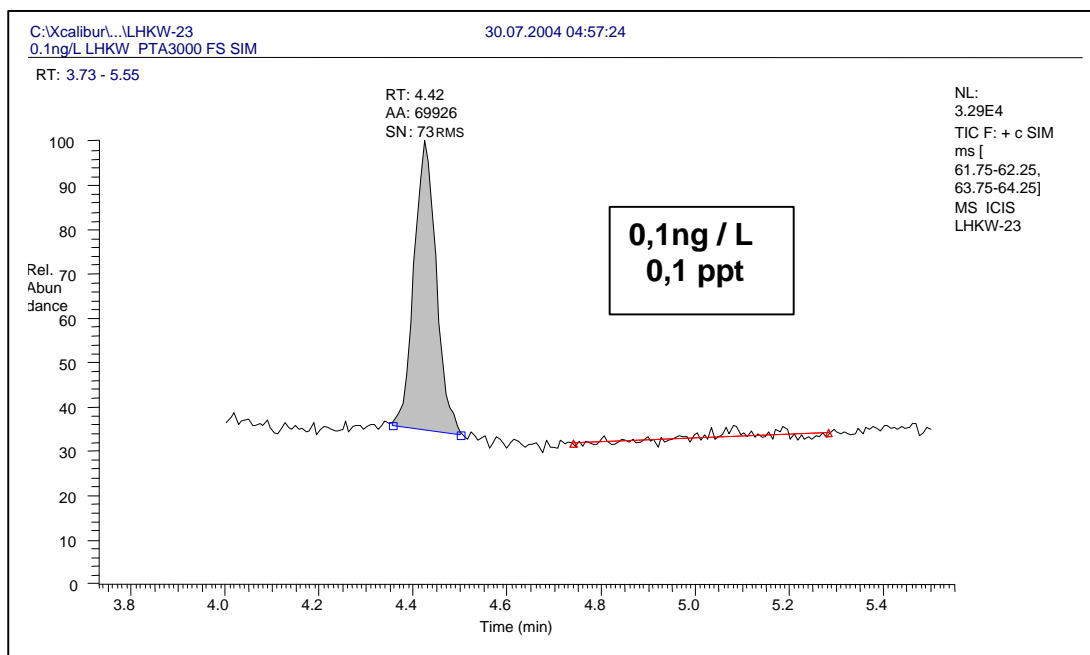


PTA3000 - validation of vinyl chloride

PTA3000 conditions: sample: 40°C; valve: 100°C; col-con: 200°C; trap: -65°C;
purge time: 20min; TT 100s

GC conditions: RTX624 + RTX-VRX, each 30m x 0.32 mm x 1.8µm; He 1.5 ml/min
40°C/3min, 10°C/min → 200°C, 200°C/3min

MS conditions: TraceDSQ, Ei-SIM mode, m/z: 62, 64



Standard deviation: (8 injections, 100ng/L): 6,8%

